

Public Document Pack



Neuadd y Sir
Y Rhadyr
Brynbuga
NP15 1GA

Dydd Mercher, 30 Hydref 2024

Hysbysiad o gyfarfod:

Pwyllgor Craffu Lle

Dydd Iau, 7fed Tachwedd, 2024 at 2.00 pm,
Siambwr y Cyngor, Neuadd y Sir, Y Rhadyr, Brynbuga

Nodwch y cynhelir rhag gyfarfod 30 munud cyn dechrau'r cyfarfod ar gyfer aelodau'r pwyllgor

AGENDA

Item No	Item	Pages
1.	Ymddiheuriadau am absenoldeb	
2.	Datganiadau o Fuddiant	
3.	Fforwm Agored i'r Cyhoedd Canllawiau ~ Fforwm Agored Cyhoeddus y Pwyllgor Dethol Mae ein cyfarfodydd Pwyllgor Dethol yn cael eu ffrydio'n fyw a bydd dolen i'r ffrwd fyw ar gael ar dudalen gyfarfod gwefan Cyngor Sir Fynwy Os hoffech rannu eich barn ar unrhyw gynigion sy'n cael eu trafod gan Bwyllgorau Dethol, gallwch gyflwyno eich sylwadau drwy ddefnyddio'r ffurflen hon <ul style="list-style-type: none">Rhannwch eich barn drwy lanlwytho ffeil fideo neu sain (uchafswm o 4 munud); neuCyflwynwch sylwadau ysgrifenedig (drwy Microsoft Word, uchafswm o 500 gair) Bydd angen i chi gofrestru ar gyfer cyfrif Fy Sir Fynwy er mwyn cyflwyno'r ymateb neu ddefnyddio eich manylion mewngofnodi os ydych wedi cofrestru o'r blaen. Y dyddiad cau ar gyfer cyflwyno sylwadau i'r Cyngor yw 5pm dri	

diwrnod gwaith clir cyn y cyfarfod. Os bydd y sylwadau a dderbynnir yn fwy na 30 munud, bydd detholiad o'r rhain, yn seiliedig ar thema, yn cael eu rhannu yng nghyfarfod y Pwyllgor Dethol. Bydd yr holl sylwadau a dderbynnir ar gael i gynghorwyr cyn y cyfarfod.

Os hoffech fynychu un o'n cyfarfodydd i siarad dan y Fforwm Agored i'r Cyhoedd, bydd angen i chi roi tri diwrnod o hysbysiad i ni drwy gysylltu â Scrutiny@monmouthshire.gov.uk. Y cadeirydd sy'n penderfynu faint o amser a roddir i bob aelod o'r cyhoedd i siarad, ond i'n galluogi i roi cyfle i nifer o siaradwyr, gofynnwn nad yw cyfraniadau yn hirach na 3 munud.

Os hoffech awgrymu pynciau i un o'n Pwyllgorau Dethol graffu arnynt yn y dyfodol, gwnewch hynny drwy e-bostio Scrutiny@monmouthshire.gov.uk

4. Trafodaeth Cwestiwn ac Ateb ar Bont Ingles/Vauxhall, Trefynwy

Trafod y materion yn gysylltiedig gyda'r bont gyda chynrychiolydd o'r Weinyddiaeth Amddiffyn.

5. Craffu STEAM

1 - 20

Craffu ffigurau STEAM Sir Fynwy (cyfaint a gwerth twristiaeth).

6. Blaenraglen Gwaith a Rhestr Weithredu y Pwyllgor Craffu Lle

21 - 24

7. Cynllunydd Gwaith y Cabinet a'r Cyngor

25 - 38

8. Cadarnhau cofnodion y cyfarfod a gynhaliwyd ar 10 Hydref 2024

39 - 48

9. Cyfarfod nesaf: 5 Rhagfyr 2024 am 10 a.m.

Paul Matthews

Prif Weithredwr

MONMOUTHSHIRE COUNTY COUNCIL
CYNGOR SIR FYNWY

MAE CYFANSODDIAD Y PWYLLGOR FEL A GANLYN:

County Councillor Louise Brown
Shirenewton;
Welsh Conservative Party
County Councillor Emma Bryn
Wyesham;
Independent Group
County Councillor Tomos Dafydd Davies
Llanfoist & Govilon;
Welsh Conservative Party
County Councillor Lisa Dymock
Portskewett;
Welsh Conservative Party
County Councillor Jane Lucas
Osbaston;
Welsh Conservative Party
County Councillor Jackie Strong
Caldicot Cross;
Welsh Labour/Llafur Cymru
County Councillor Laura Wright
Grofield;
Welsh Labour/Llafur Cymru
County Councillor Tudor Thomas
Park;
Welsh Labour/Llafur Cymru
County Councillor John Crook
Magor East with Undy;
Welsh Labour/Llafur Cymru
County Councillor Angela Sandles
Magor East with Undy;
Labour and Co-Operative Party
County Councillor Martin Newell
Town;
Welsh Conservative Party

Gwybodaeth I'r Cyhoedd

Mynediad i gopiâu papur o agendâu ac adroddiadau

Gellir darparu copi o'r agenda hwn ac adroddiadau perthnasol i aelodau'r cyhoedd sy'n mynychu cyfarfod drwy ofyn am gopi gan Gwasanaethau Democrataidd ar 01633 644219. Dylid nodi fod yn rhaid i ni dderbyn 24 awr o hysbysiad cyn y cyfarfod er mwyn darparu copi caled o'r agenda hwn i chi.

Edrych ar y cyfarfod ar-lein

Gellir gweld y cyfarfod ar-lein yn fyw neu'n dilyn y cyfarfod drwy fynd i www.monmouthshire.gov.uk neu drwy ymweld â'n tudalen Youtube drwy chwilio am MonmouthshireCC. Drwy fynd i mewn i'r ystafell gyfarfod, fel aelod o'r cyhoedd neu i

gymryd rhan yn y cyfarfod, rydych yn caniatáu i gael eich ffilmio ac i ddefnydd posibl y delweddau a'r recordiadau sain hynny gan y Cyngor.

Y Gymraeg Mae'r Cyngor yn croesawu cyfraniadau gan aelodau'r cyhoedd drwy gyfrwng y Gymraeg neu'r Saesneg. Gofynnwn gyda dyledus barch i chi roi 5 diwrnod o hysbysiad cyn y cyfarfod os dymunwch siarad yn Gymraeg fel y gallwn ddarparu ar gyfer eich anghenion.

Nodau a Gwerthoedd Cyngor Sir Fynwy

i ddod yn sir ddi-garbon, gan gefnogi lles, iechyd ac urddas i bawb ar bob cam o'u bywydau.

Amcanion rydym yn gweithio tuag atynt

- Lle teg i fyw lle mae effeithiau anghydraddoldeb a thlodi wedi'u lleihau;
- Lle gwyrdd i fyw a gweithio gyda llai o allyriadau carbon a gwneud cyfraniad cadarnhaol at fynd i'r afael â'r argyfwng yn yr hinsawdd a natur;
- Lle ffyniannus ac uchelgeisiol, lle mae canol trefi bywiog a lle gall busnesau dyfu a datblygu;
- Lle diogel i fyw lle mae gan bobl gartref maen nhw'n teimlo'n ddiogel ynddo;
- Lle cysylltiedig lle mae pobl yn teimlo'n rhan o gymuned ac yn cael eu gwerthfawrogi;
- Lle dysgu lle mae pawb yn cael cyfle i gyrraedd eu potensial.

Ein gwerthoedd

- **Bod yn agored:** anelwn fod yn agored ac onest i ddatblygu perthnasoedd ymddiriedus
- **Tegwch:** anelwn ddarparu dewis teg, cyfleoedd a phrofiadau a dod yn sefydliad a adeiladwyd ar barch un at y llall.
- **Hyblygrwydd:** anelwn fod yn hyblyg yn ein syniadau a'n gweithredoedd i ddod yn sefydliad effeithlon ac effeithiol.
- **Gwaith tîm:** anelwn gydweithio i rannu ein llwyddiannau a'n methiannau drwy adeiladu ar ein cryfderau a chefnogi ein gilydd i gyflawni ein nodau.
- **Caredigrwydd** – Byddwn yn dangos caredigrwydd i bawb yr ydym yn gweithio gyda nhw, gan roi pwysigrwydd perthnasoedd a'r cysylltiadau sydd gennym â'n gilydd wrth wraidd pob rhyngweithio.

Canllaw Cwestiynau Craffu Sir Fynwy

1. Pam mae'r Pwyllgor yn craffu ar hyn? (cefndir, materion allweddol)
2. Beth yw rôl y Pwyllgor a pha ganlyniad mae'r Aelodau am ei gyflawni?
3. A oes digon o wybodaeth i gyflawni hyn? Os nad oes, pwy allai ddarparu hyn?

- Cytuno ar y drefn holi a pha Aelodau fydd yn arwain
- Cytuno ar gwestiynau i swyddogion a chwestiynau i Aelod y Cabinet

Cwestiynau'r Cyfarfod

Craffu ar Berfformiad

1. Sut mae perfformiad yn cymharu â'r blynyddoedd blaenorol? Ydy e'n well/yn waeth? Pam?
2. Sut mae perfformiad yn cymharu â chynghorau eraill/darparwyr gwasanaethau eraill? Ydy e'n well/yn waeth? Pam?
3. Sut mae perfformiad yn cymharu â thargedau gosodedig? Ydy e'n well/yn waeth? Pam?
4. Sut cafodd targedau perfformiad eu gosod? Ydyn nhw'n ddigon heriol/realistig?
5. Sut mae defnyddwyr gwasanaethau/y cyhoedd/partneriaid yn gweld perfformiad y gwasanaeth?
6. A fu unrhyw awdid ac archwiliadau diweddar? Beth oedd y canfyddiadau?
7. Sut mae'r gwasanaeth yn cyfrannu at wireddu amcanion corfforaethol?
8. A yw gwelliant/dirwyriad mewn perfformiad yn gysylltiedig i gynnydd/ostyngiad mewn adnodd?
Pa gapasiti sydd yna i wella?

Craffu ar Bolisi

1. Ar bwy mae'r polisi yn effeithio ~ yn uniongyrchol ac yn anuniongyrchol? Pwy fydd yn elwa fwyaf/leiaf?
2. Beth yw barn defnyddwyr gwasanaeth /rhanddeiliaid? Pa ymgynghoriad gafodd ei gyflawni? A wnaeth y broses ymgynghori gydymffurfio ag Egwyddorion Gunning? A yw rhanddeiliaid yn credu y bydd yn sicrhau'r canlyniad a ddymunir?
3. Beth yw barn y gymuned gyfan – safbwynt y 'trethdalwr'?
4. Pa ddulliau a ddefnyddiwyd i ymgynghori â'r rhanddeiliaid? A oedd y broses yn galluogi pawb â chyfran i ddweud eu dweud?
5. Pa ymarfer ac opsiynau sydd wedi eu hystyried wrth ddatblygu/adolygu'r polisi hwn? Pa dystiolaeth sydd i hysbysu beth sy'n gweithio? A yw'r polisi yn ymwneud â maes lle mae diffyg ymchwil cyhoeddedig neu dystiolaeth arall?
6. A yw'r polisi'n ymwneud â maes lle ceir anghydraddoldebau hysbys?
7. A yw'r polisi hwn yn cyd-fynd â'n hamcanion corfforaethol, fel y'u diffinnir yn ein cynllun corfforaethol? A yw'n cadw at ein Safonau Iaith Gymraeg?
8. A gafodd yr holl ddatblygu cynaliadwy, y goblygiadau cydraddoldeb a diogelu perthnasol eu hystyried?

Er enghraifft, beth yw'r gweithdrefnau sydd angen bod ar waith i amddiffyn plant?

9. Faint fydd y gost hon i'w gweithredu a pha ffynhonnell ariannu sydd wedi'i nodi?

10. Sut fydd perfformiad y polisi yn cael ei weithredu a'r effaith yn cael ei gwerthuso?

Cwestiynau Cyffredinol:

Grymuso Cymunedau

- Sut ydym ni'n cynnwys cymunedau lleol a'u grymuso i ddylunio a darparu gwasanaethau i gyd-fynd ag angen lleol?
- A ydym ni'n cael trafodaethau rheolaidd gyda chymunedau am flaenoriaethau'r gwasanaeth a pha lefel o wasanaeth y gall y cyngor fforddio ei ddarparu yn y dyfodol?
- A yw'r gwasanaeth yn gweithio gyda dinasyddion i egluro rôl gwahanol bartneriaid wrth ddarparu gwasanaeth a rheoli disgwyliadau?
- A oes fframwaith a phroses gymesur ar waith ar gyfer asesu perfformiad ar y cyd, gan gynnwys o safbwynt dinesydd, ac a oes gennych chi drefniadau atebolrwydd i gefnogi hyn?
- A oes Asesiad Effaith Cydraddoldeb wedi'i gynnal? Os felly a all yr Arweinydd a'r Cabinet /Uwch Swyddogion roi copïau i'r Aelodau ac eglurhad manwl o'r Asesiad o'r Effaith ar Gydraddoldeb (EQIA) a gynhaliwyd mewn perthynas â'r cynigion hyn?
- A all yr Arweinydd a'r Cabinet/Uwch Swyddogion sicrhau aelodau bod y cynigion hyn yn cydymffurfio â deddfwriaeth Cydraddoldeb a Hawliau Dynol? A yw'r cynigion yn cydymffurfio â Chynllun Cydraddoldeb Strategol yr Awdurdod Lleol?

Galwadau'r Gwasanaeth

- Sut fydd newid polisi a deddfwriaeth yn effeithio ar y ffordd mae'r cyngor yn gweithredu?
- A ydym ni wedi ystyried demograffeg ein cyngor a sut bydd hyn yn effeithio ar ddarparu gwasanaethau a chyllid yn y dyfodol?
- A ydych chi wedi adnabod ac ystyried y tueddiadau tymor hir a allai effeithio ar eich maes gwasanaeth, pa effaith allai'r tueddiadau hyn ei chael ar eich gwasanaeth/allai eich gwasanaeth ei gael ar y tueddiadau hyn, a beth sy'n cael ei wneud mewn ymateb?

Cynllunio Ariannol

- A oes gennym ni gynlluniau ariannol canolig a hirdymor cadarn yn eu lle?
- A ydym ni'n cysylltu cyllidebau â chynlluniau a chanlyniadau ac adrodd yn effeithiol ar y rhain?

Gwneud arbedion a chynhyrchu incwm

- A oes gennym ni'r strwythurau cywir ar waith i sicrhau bod ein dulliau effeithlonrwydd, gwelliant a thrawsnewid yn gweithio gyda'i gilydd i sicrhau'r arbedion mwyaf posibl?
- Sut ydym ni'n gwneud y mwyaf o incwm? A ydym ni wedi cymharu polisiau eraill y cyngor i sicrhau'r incwm mwyaf posibl ac wedi ystyried yn llawn y goblygiadau ar ddefnyddwyr gwasanaeth?

- A oes gennym ni gynllun gweithlu sy'n ystyried capasiti, costau, a sgiliau'r gweithlu gwirioneddol yn erbyn y gweithlu a ddymunir?

Cwestiynau i'w gofyn o fewn blwyddyn i'r penderfyniad:

- A gafodd canlyniadau arfaethedig y cynnig eu cyflawni neu a oedd canlyniadau eraill?
- A oedd yr effeithiau wedi'u cyfyngu i'r grŵp yr oeddech chi ar y dechrau yn meddwl fyddai wedi cael ei effeithio h.y. pobl hŷn, neu a gafodd eraill eu heffeithio e.e. pobl ag anableddau, rhieni â phlant ifanc?
- A yw'r penderfyniad yn dal i fod y penderfyniad cywir neu a oes angen gwneud addasiadau?

Cwestiynau i'r Pwyllgor ar ddiwedd y cyfarfod ...

A oes gennym ni'r wybodaeth angenrheidiol i ffurfio casgliadau/i wneud argymhellion i'r pwyllgor gwaith, cyngor, partneriaid eraill? Os nad oes, a oes angen i ni:

- (i) Ymchwilio i'r mater yn fwy manwl?
- (ii) Gael rhagor o wybodaeth gan dystion eraill - Aelod o'r Bwrdd Gweithredol, arbenigwr annibynnol, aelodau o'r gymuned, defnyddwyr gwasanaeth, cyrff rheoleiddio...

Cytuno ar gamau pellach sydd i'w cymryd o fewn amserlen/adroddiad monitro yn y dyfodol.

SUBJECT:	2023 MONMOUTHSHIRE TOURISM PERFORMANCE
MEETING:	PLACE SCRUTINY COMMITTEE
DATE:	THURSDAY 7TH NOVEMBER 2024
DIVISION/WARDS AFFECTED:	ALL

1. PURPOSE:

To review 2023 tourism performance in Monmouthshire, based on Monmouthshire's 2023 STEAM (Scarborough Tourism Economic Activity Monitor) report.

2. RECOMMENDATIONS:

That Place Scrutiny Committee review the information detailed in this report.

3. KEY ISSUES:

Tourism delivers a wide range of benefits for the county, including the generation of visitor spend to support rural services and high streets, to maintain local heritage and to sustain an interesting programme of events, experiences and year-round employment opportunities for the benefit of locals. Place branding also has a significant impact on the way the area is perceived by its residents and visitors and these perceptions have a very real effect on its attractiveness for investment and the quality of life for its citizens (including resident satisfaction, civic pride, access to cultural and leisure activities and employment etc, which impact on health and wellbeing).

This report focuses on the economic benefits of tourism, estimated annually using the STEAM (Scarborough Tourism Economic Activity Monitor) model which has been used for more than twenty years by local authorities (LAs) in Wales. There are a wide range of inputs to the model for each LA area including data collected locally on visitor accommodation bedstock, visitor accommodation occupancy rates and visitor figures for key attractions and events. The number of tourist nights and days (reported by STEAM) are used by Welsh Government in its formula for calculating the annual settlement figure for each LA.

According to Monmouthshire STEAM, in 2023, 2.29 million visitors came to Monmouthshire, spending 3.53m visitor days in the county, generating more than £329 million for the local economy, and supporting 3,462 full time equivalent (FTE) jobs. ([Monmouthshire 2023 STEAM full report & summary](#)).

The [Monmouthshire labour market stats](#) give a total number of jobs for Monmouthshire of 35k. using the part time / full time split for Monmouthshire, the 3,462 FTE jobs are equivalent to approximately 5,143 actual jobs (assuming FT is 37 hours per week and PT 16 hours). This means that 15% of Monmouthshire jobs are supported by tourism spend.

2023 STEAM figures show continued recovery of Monmouthshire's visitor economy post pandemic with the economic impact of tourism increased by 2% and the number of FTE jobs supported by tourism increased by 3.2% compared with 2022 figures. Total visitor numbers were down -1.8% compared with 2022 but Economic Impact Per Visitor Day (EIPVD) was up 1.2% (in real terms) reflecting the increased importance of staying visitors (particularly those staying in non-serviced accommodation) as a proportion of all visitors to Monmouthshire in 2023.

The draft SE Wales STEAM results for 2023 indicate that Monmouthshire is outperforming the regional averages for growth in economic impact, FTEs and Economic Impact Per Visitor Day.

% change for Monmouthshire KPIs compared with the SE Wales averages (2022-2023):

- Economic impact (% change) +2% (+1.2% South East Wales average)
- Visitor numbers (% change) -1.8% (+4.3% South East Wales average)
- Visitor Days (% change) +0.8% (+4.2% South East Wales average)
- FTEs (% change) = +3.2% (+2.1% South East Wales average)
- EIPVD £93.43 (+1.2%) (£80.10 South East Wales average (-2.9%))

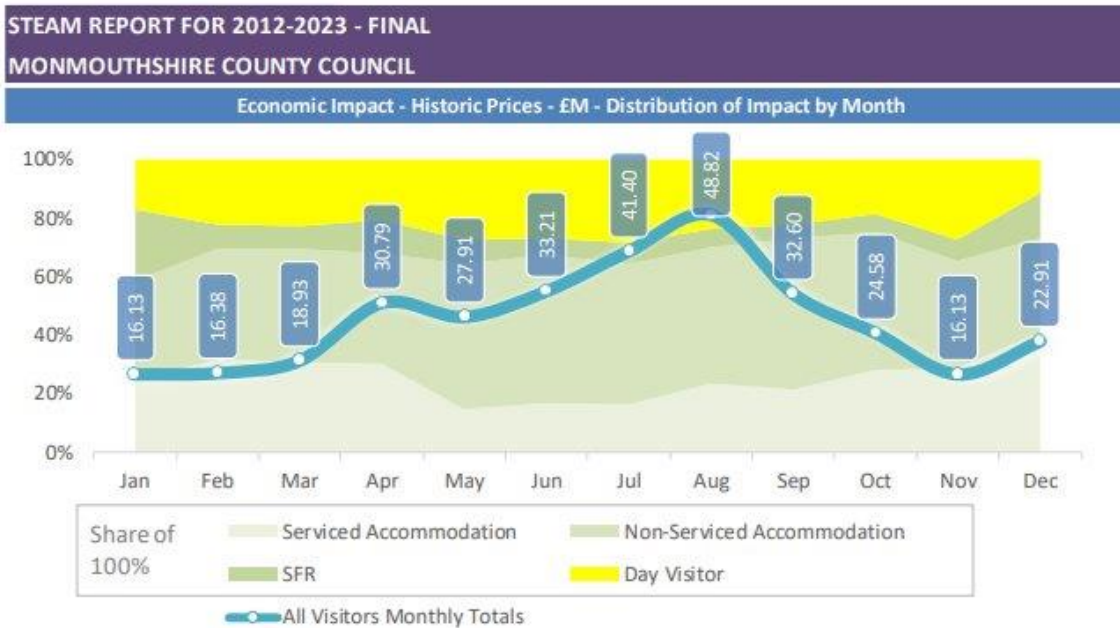
The pie charts below (taken from Monmouthshire’s 2023 STEAM report page 13) show that staying visitors generate the lion’s share of tourism benefits, i.e. the 25% of visitors who stay overnight generate 77% of visitor spend and support 83% of tourism related FTEs.



The continued increase in capacity of non-serviced accommodation was responsible for maintaining growth in the economic and FTE benefits of tourism in Monmouthshire in 2023, and for increasing visitor yield (EIPVD) despite challenging weather and economic conditions. (Visitor accommodation capacity in the county increased overall by 569 bedspaces between 2022 and 2023. 552 of these new bedspaces were non-serviced, of which 399 were in the self-catering sector. The remaining 17 new bedspaces were in the serviced sector).

The increase in visitor yield (EIPVD) between 2022 and 2023 reflects the increasing importance of staying visitors relative to day visitors. In 2023 the total number of visitor days was split 51.4% staying visitor days and 48.6% day visitor days. In 2022 visitor days were split equally between staying visitors (50%) and day visitors (50%) whereas in 2019 staying visitors accounted for 47% of visitor days and day visitors accounted for 53% of visitor days. (Staying visitors are worth considerably more to the economy than day visitors).

The line graph below (taken from Monmouthshire’s 2023 STEAM report page 14) shows the distribution of tourism related economic impact by month. It shows that in 2023, 35% of economic impact benefits were generated off-peak between October and March.



While the rate of tourism related economic growth has slowed, overall performance was better than expected in 2023. The weather in the UK during 2023 was a mix of very warm and very wet conditions. It was the second warmest year on record, with several months experiencing higher-than-average temperatures (notably June & September). There were more “extremely wet” days compared to previous decades, especially in school holiday periods, and the number of days with temperatures exceeding 30°C tripled.

Monmouthshire’s approved Destination Management Plan – the strategic plan that drives tourism development, management and marketing of the destination - ran to 2020 when Covid hit. While there has been 15% real growth (based on indexed figures with the effects of inflation removed) between 2017 and 2023 (with a strong recovery post-pandemic), there is a need to renew the Plan to reflect the changing regulatory and tax environment in which the industry operates, and to align it better with Monmouthshire’s Community & Corporate Plan. This renewal will include a broadening of the performance metrics to demonstrate the cultural, social and environmental benefits of tourism alongside the economic benefits.

Anian Ltd was commissioned in September to review and renew Monmouthshire’s Destination Management Plan and to identify best practice examples of destination management and destination partnership arrangements from comparable areas in the UK and overseas.

The work to date has included engagement with a wide range of destination stakeholders – businesses, visitors and residents - to ensure that while the Plan is informed by the market, it will be shaped by local people and businesses. 96 stakeholders have been engaged directly so far including 12 MCC councillors and staff, 18 key industry representatives and leaders (including a small group of activity operators who want to form a 'group') and 9 representatives from partner bodies and organisations. In addition, 157 residents, 61 businesses and 80 visitors responded to the online destination survey.

4. INTEGRATED IMPACT ASSESSMENT, (includes equality, future generations, social justice, safeguarding and corporate parenting).

The report is for information only, so no impact assessment is required at this time.

5. OPTIONS APPRAISAL

The report is for information only so no options are presented at this time.

6. EVALUATION CRITERIA

Monmouthshire 2023 STEAM results show continued recovery of Monmouthshire's visitor economy post pandemic. The feedback from the Destination Management Plan review consultation will provide an insight into satisfaction levels amongst businesses, visitors and residents with the way Monmouthshire is currently developed, managed and promoted as a visitor destination. It will also help us assess the value of the place brand(s) and improve our understanding of what our communities think and feel about tourism. This will in turn provide the foundation on which to build support and improved perceptions of the benefits of tourism to ensure that a warm welcome remains at the heart of our visitor offer. A draft Destination Management Plan is due to be available in early 2025.

7. REASONS:

No decisions need to be made at this time.

8. RESOURCE IMPLICATIONS:

There are no resource implications at this time.

9. CONSULTEES:

Lead Portfolio Cabinet Members

10. BACKGROUND PAPERS:

Monmouthshire 2023 STEAM
Draft SE Wales 2023 STEAM

11. AUTHOR: Nicola Edwards, J/S Destination Manager

12. CONTACT DETAILS:

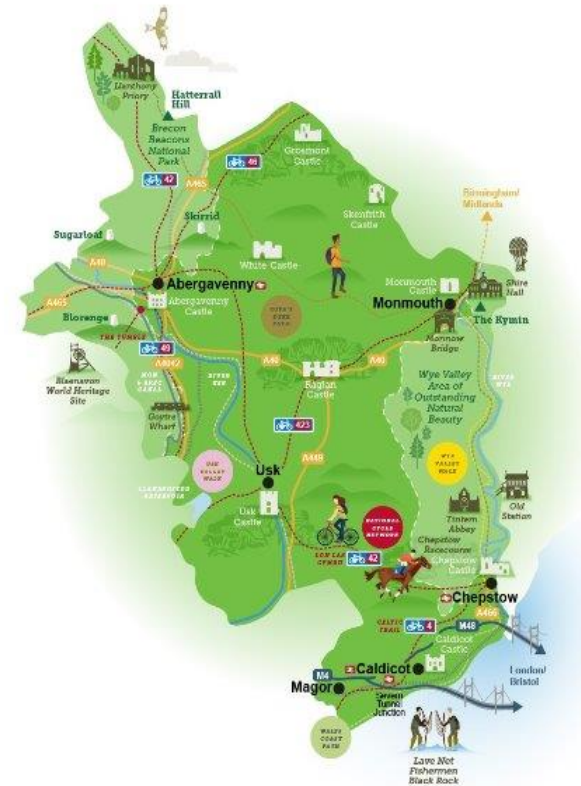
Tel: 01633 644847

E-mail: nicolaedwards@monmouthshire.gov.uk

Tourism delivers a wide range of benefits for Monmouthshire communities

- Important part of the foundational economy
- Generates visitor spend to support:
 - Rural services
 - High streets
 - Local heritage, culture and leisure assets
 - Event programmes
 - Employment opportunities
- Number of tourist days and nights used by WG to calculate LA settlement figure
- Place branding impacts on:
 - Perceptions of area
 - Attractiveness for investment
 - Quality of life for citizens

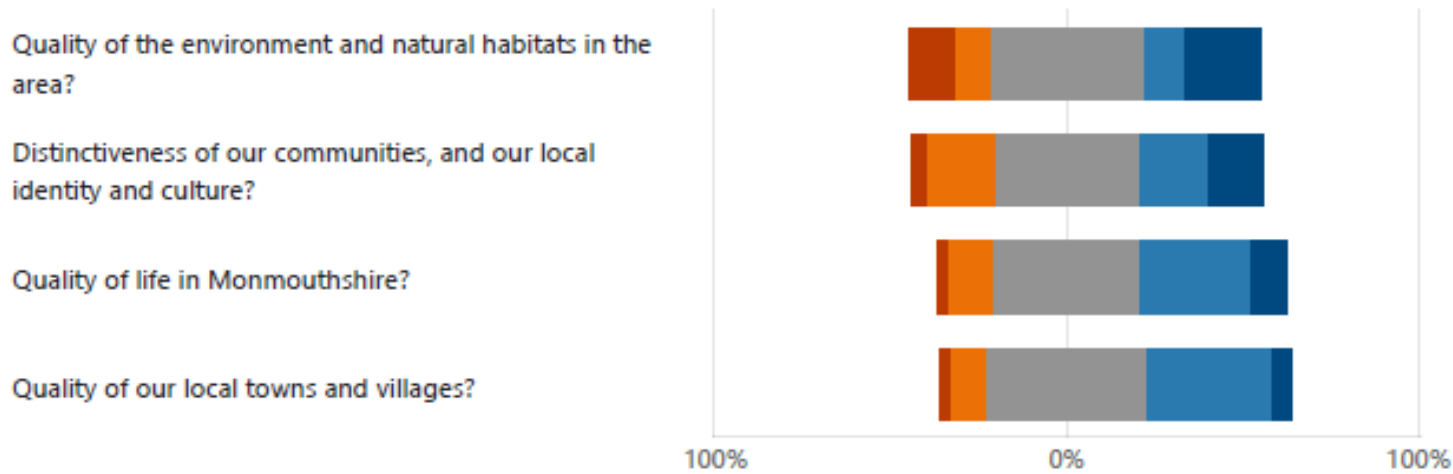
Page 8



What do residents think of the impact of tourism on Monmouthshire?

12. What kind of impact does tourism have on the:

■ It damages ■ It has no effect ■ It helps to maintain ■ It helps to improve ■ Don't know



Source: 2024 Destination Resident Survey 157 responses



How is volume & value of tourism estimated?

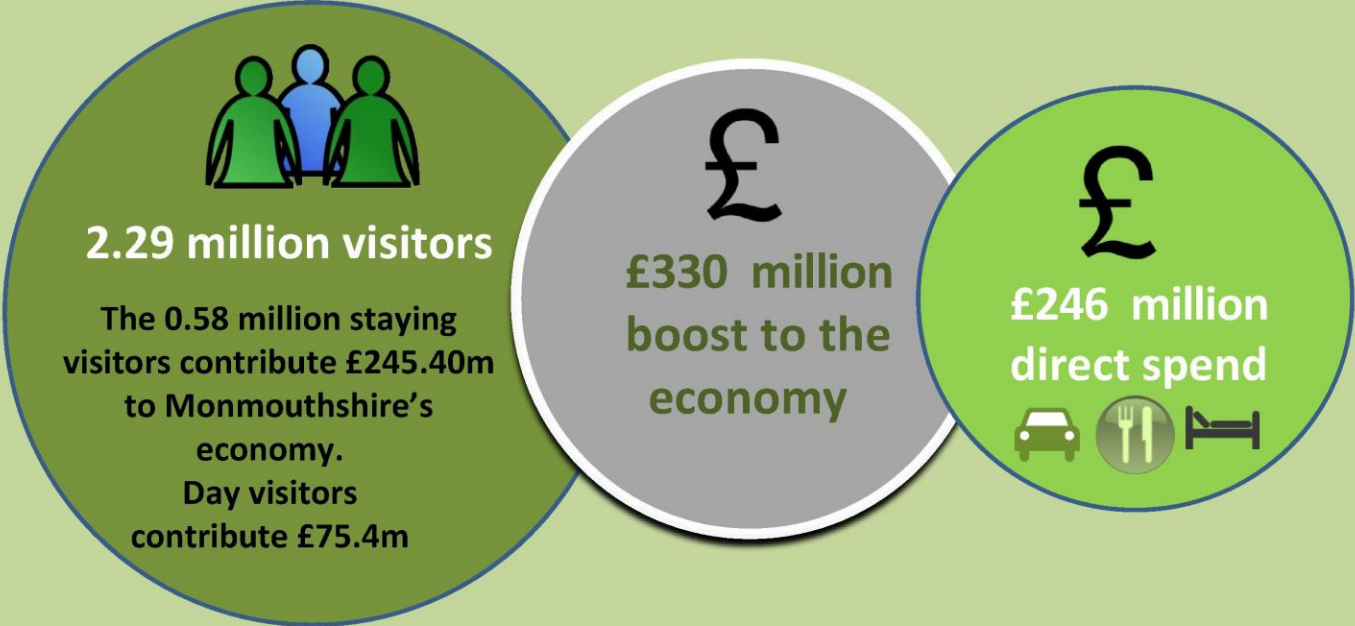
Using the STEAM (Scarborough Tourism Economic Activity Monitor) model

- Used by Welsh LAs for more than 20 years
- Based on inputs collected nationally and locally including:
 - Visitor accommodation bedstock
 - Visitor accommodation occupancy rates
 - Visitor figures for attractions & events



Value of tourism to Monmouthshire's economy

(STEAM 2023)



3,462 jobs (FTE) are supported by the sector

Page 11

3,462 FTE jobs represents c15% of employment in Monmouthshire



How does 2023 performance compare with 2022?

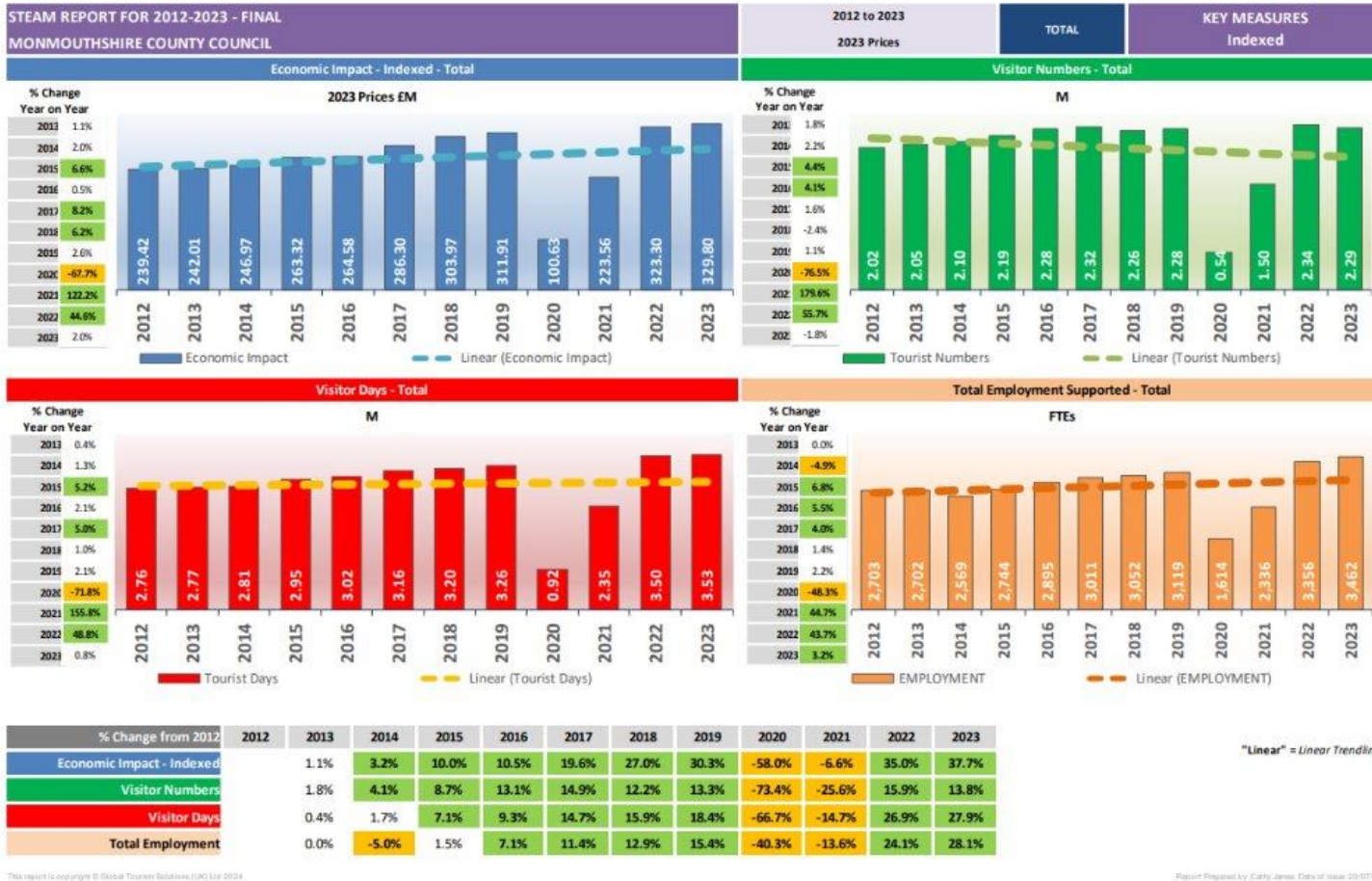
2023 STEAM figures show **continued recovery** of Monmouthshire's visitor economy post pandemic.

Comparisons with 2022 figures:

- Economic impact of tourism **increased by 2%**
- Number of FTE jobs supported by tourism **increased by 3.2%**
- Total visitor numbers **down 1.8%** but...
- Economic Impact Per Visitor Day (EIPVD) **up 1.2%** reflecting the increased importance of staying visitors (particularly those staying in non-serviced accommodation) as a proportion of all visitors to Monmouthshire in 2023.



Monmouthshire Tourism Performance Trends 2012 – 2023 (sTEAM 2023 p. 47)



How does Monmouthshire's performance compare with the Region's?

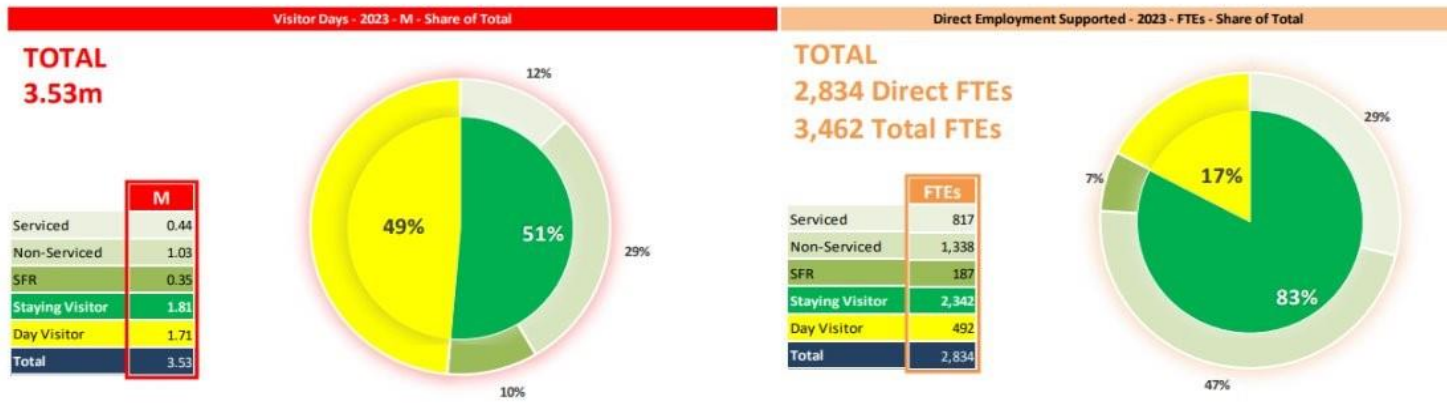
% change for Monmouthshire KPIs compared with the SE Wales averages (2022–2023):

- Economic impact **+2%** (**+1.2%** SE Wales average)
- Visitor numbers **-1.8%** (**+4.3%** SE Wales average)
- Visitor Days **+0.8%** (**+4.2%** SE Wales average)
- FTEs **+3.2%** (**+2.1%** SE Wales average)
- EIPVD **£93.43 (+1.2%)** (**£80.10** SE Wales average **-2.9%**)



Staying visitors generate the lion's share of tourism benefits

STEAM REPORT FOR 2012-2023 - FINAL MONMOUTHSHIRE COUNTY COUNCIL	2023 Historic Prices	TOTAL	DISTRIBUTION BY VISITOR TYPE Historic Prices
Economic Impact - Historic Prices - £M - Share of Total	Visitor Numbers - 2023 - M - Share of Total		



Average EI per visitor £144 (Day visitors £42.79 compared with Staying visitors £439)



What is driving EI growth in Monmouthshire?

Type of bedspace (b/s)	No of b/s 2016	No of b/s 2022	No of b/s 2023	% change 2016 - 2023	Change in b/s 2022 - 2023
All visitor b/s	6,419	9,829	10,398	+47%	+569
Serviced b/s	2,761	2,833	2,850	+3%	+17
Non-serviced b/s	3,658 (57% of all b/s)	6,996	7,548 (73% of all b/s)	+106%	+552
Self-catering b/s (incl in above)	1,528	2,931	3,330	+118%	+399



Monmouthshire visitor accommodation occupancy 2022 - 2024

Accommodation type	Occupancy 2022	Occupancy 2023	Occupancy 2024
Hotel	72.2%	69.7%	73.6% (YTD Sept)
Self-catering	55.2%	51.7%	Data not yet available



Economic Impact – Distribution of Impact by Month

STEAM REPORT FOR 2012-2023 - FINAL
MONMOUTHSHIRE COUNTY COUNCIL

Economic Impact - Historic Prices - £M - Distribution of Impact by Month



Page 18

35% of EI generated off-peak (October to March)



Future of tourism in Monmouthshire

- Previous Plan ended in 2020 when Covid hit
- 15% real growth between 2017 and 2023
- New operating environment
 - New Community & Corporate Plan
 - Changed perceptions of tourism
 - Changing regulatory / tax environment
- Need to report on broader range of metrics
- Anian Ltd commissioned to review / renew Plan
- Informed by market but shaped by locals
- Consultation / stakeholder engagement phase almost complete
- Draft Plan due early 2025

Page 19



Diolch / Thanks

Any questions?

nicolaedwards@monmouthshire.gov.uk

www.visitmonmouthshire.com

#LoveMonmouthshire

Page 20



monmouthshire
sir fynwy



Monmouthshire's Scrutiny Forward Work Programme 2024-25

Place Scrutiny Committee – Meetings at 2pm unless otherwise stated				
7 th November 2024	Question and Answer Discussion on Ingles/Vauxhall Bridge, Monmouth	To discuss with a representative of the Ministry of Defence the issues associated with the bridge.	Ministry of Defence	Public concern
	Scrutiny of STEAM	Scrutiny of Monmouthshire STEAM (tourism volume and value) figures.	Nicola Edwards Kevin Ford Cllr Sandles Cllr Griffiths	Policy Development
5 th December 2024	To be confirmed Water Quality	<i>To invite Welsh Water to discuss water quality concerns.</i>	TBC	<i>Policy Development.</i>
9 th December 2024 (10am)	Local Flood Strategy (Joint with Public Services Committee)	<i>Pre-decision scrutiny of adoption of the Local Flood Strategy.</i>	<i>Craig O'Connor Cllr Maby</i>	<i>Pre-decision Scrutiny</i>
6 th February 2025				
27 th March 2025				
22 nd May 2025 (provisional)				
10 th July 2025 (provisional)	Strategic Equality Plan 24/25 Monitoring Report	<i>To scrutinise the Council's progress.</i>	<i>Pennie Walker Cllr Sandles</i>	<i>Policy Development</i>
To be confirmed	Car Parking Review		<i>Carl Touhig Cllr Griffiths</i>	
To be confirmed	Tackling Poverty and Inequality Action Plan	<i>To scrutinise performance against the action plan.</i>	<i>Lucinda Boyland Cllr Sandles</i>	<i>Performance Monitoring</i>

Monmouthshire's Scrutiny Forward Work Programme 2024-25

Place Scrutiny Committee – Meetings at 2pm unless otherwise stated				
To be confirmed (end 24/early 25 – Feb?)	Monmouth Placemaking Plan	<i>To conduct pre-decision scrutiny.</i>	<i>Daniel Fordham Cllr Griffiths</i>	<i>Pre-decision Scrutiny</i>
To be confirmed (end 24/early 25 – Feb?)	Abergavenny Placemaking Plan	<i>To conduct pre-decision scrutiny prior to adoption of Plan by Cabinet.</i>	<i>Daniel Fordham Cllr Griffiths</i>	<i>Pre-decision Scrutiny</i>
To be confirmed (end 24/early 25 – Feb?)	Magor Placemaking Plan	<i>To conduct pre-decision scrutiny.</i>	<i>Daniel Fordham Cllr Griffiths</i>	<i>Pre-decision Scrutiny</i>
To be confirmed (2025 – Feb?)	Road Safety Strategy	<i>To scrutinise the Road Safety Strategy.</i>	<i>Geraint Roberts Paul Keeble Cllr Maby</i>	<i>Pre-decision Scrutiny</i>
To be confirmed (March 25?)	Pavement Café Policy	<i>To scrutinise the pavement café policy as the basis for making decisions on applications for licences.</i>	<i>Paul Keeble Cllr Griffiths</i>	<i>Policy Development</i>
To be confirmed	Shire Hall Museum Monmouth	<i>To scrutinise progress of the National Lottery Heritage Fund development phase and consider options for the stage 2 delivery bid.</i>	<i>Tracey Thomas Cllr Sandles</i>	<i>Policy Development</i>
To be confirmed	Electric Vehicle Charging Strategy	<i>To scrutinise progress of the strategy prior to Cabinet decision.</i>	<i>Deb Hill-Howells Ian Hoccom Cllr Maby</i>	<i>Pre-decision Scrutiny</i>
To be confirmed	Monlife Heritage Strategy		<i>Tracey Thomas</i>	
To be confirmed	Active Travel Plans	<i>Across Highways and MonLife</i>		

Monmouthshire's Scrutiny Forward Work Programme 2024-25

Place Scrutiny Committee – Meetings at 2pm unless otherwise stated				
To be confirmed (early 2025)	Destination management Plan	<i>To conduct pre-decision scrutiny.</i>	<i>Matthew Lewis</i>	<i>Pre-decision Scrutiny</i>
Corporate and Community Plan Items for the Committee's consideration for inclusion into the Place Scrutiny Forward Plan:				
Inclusive Cultural Strategy				
Increase the use of local produce in schools and care homes and new food strategies and policies approved by Cabinet				
Nature Isn't Neat expansion				
Development of Active Travel routes				
Development of a new station at Magor and improvements at Severn Tunnel Junction				

Monmouthshire's Scrutiny Forward Work Programme 2024-25

Place Scrutiny Committee – Meetings at 2pm unless otherwise stated				
Creating plans for a metro that links Monmouthshire to Bristol, Newport and Cardiff				
RLDP submission for examination				
Develop a county-wide digital solution that matches those who need to travel with those who have car spaces				
RLDP for adoption				
Find new ways to progress refurbishment of Caldicot Leisure Centre				
Deforestation and school meals procurement - Food Strategy - Jointly with P&O				

Committee / Decision Maker	Meeting date / Decision due	Report Title	de	Purpose	Author	Date item added to the planner
Cabinet	Jan-TBC	2025/26 Draft Revenue and Capital Budget Proposals	Ben Callard - Resources		Jon Davies	10-Jul-24
Cabinet	Jan-25	2025/26 Draft Revenue and Capital Budget Proposals	Ben Callard - Resources		Jon Davies	4-Jun-24
Council	01-Jul-25	RLDP for Adoption	Paul Griffiths - Sustainable Economy	To adopt the RLDP following receipt of the Inspector's report, making it the County's Development Plan as defined by S38(6) of the Planning and Compulsory Purchase Act 2004	Mark Hand / Rachel Lewis	23-Aug-22
Cabinet	05-May-25	Pavement Café Policy	Paul Griffiths - Sustainable Economy	To adopt the pavement café policy as the basis for making decisions on applications for licences	Mark Hand / Paul Keeble	4-Oct-22
ICMD	09-Apr-25	Welsh Church Fund Working Group - meeting 4	Ben Callard - Resources			
Council	06-Mar-25	2025/26 Final Budget sign off including CT resolution	Ben Callard - Resources		Jon Davies	13-Jun-24
Council	06-Mar-25	2025/26 Capital Strategy & Treasury Strategy	Ben Callard - Resources		Jon Davies	13-Jun-24
Cabinet	05-Mar-25	2025/26 Final Revenue and Capital Budget Proposals	Ben Callard - Resources		Jon Davies	4-Jun-24
Cabinet	05-Mar-25	2024/25 Revenue and Capital Monitoring Month 9	Ben Callard - Resources		Jon Davies	4-Jun-24
Cabinet	05-Mar-25	2025/26 WCF/Mon Farm Strategy	Ben Callard - Resources		Jon Davies	4-Jun-24

ICMD	29-Jan-25	2025/26 Community Council and Police Precepts final	Ben Callard - Resources			
Council	23-Jan-25	Council Tax Reduction Scheme 2025/26	Ben Callard - Resources		Jon Davies	13-Jun-24
ICMD	15-Jan-25	Welsh Church Fund Working Group - meeting 3	Ben Callard - Resources		Dave Jarrett	13-Jun-24
ICMD	18-Dec-24	2025/26 Community Council and Police Precepts draft	Ben Callard - Resources		Jon Davies	13-Jun-24
ICMD	18-Dec-24	Council Tax Base 2025/26	Ben Callard - Resources		Ruth Donovan	
Council	12-Dec-24	Remuneration Report			Julie Anthony	30-Sep-24
Council	12-Dec-24	Deforestation Free Champion Council			Hazel Clatworthy	4-Oct-24
Cabinet	04-Dec-24	Strategic Risk Assessment	Ben Callard - Resources		Richard Jones	7-Oct-24
Cabinet	04-Dec-24	Community and Corporate Plan Performance Update	Mary Ann Brocklesby - Whole Authority Strategy	To provide Cabinet with an overview of the current strategic risks facing the authority.	Richard Jones	7-Oct-24
Cabinet	04-Dec-24	2024/25 Revenue and Capital Monitoring Month 6	Ben Callard - Resources	To provide Cabinet with an update on the progress that has been made to deliver the commitments set out in the Community and Corporate Plan 2022-28.	Jon Davies	4-Jun-24

Cabinet	04-Dec-24	PSOW Annual letter 2023-24			Annette Evans	1-Oct-24
Cabinet	04-Dec-24	UK Shared Prosperity Fund post March 2025 – financial implications and impact	Paul Griffiths - Sustainable Economy		Hannah Jones	10-Jul-24
Cabinet	04-Dec-24	Monmouthshire NEET Prevention Strategy			Louise Wilce	10-Jun-24
ICMD	27-Nov-24	Planning Service Annual Performance Report	Paul Griffiths - Sustainable Economy		Phil Thomas	
ICMD	13-Nov-24	TROs Amendment Order No. 15 2024 (Catrin Maby)			Graham Kinsella/Gareth Freeman	15-Oct-24
Cabinet	06-Nov-24	Future of the Former Abergavenny Library'			Nick Keyse	21-Oct-24
Cabinet	06-Nov-24	Public Health (Wales) Act 2017 – Special Procedure Licensing			Linda O Gorman	
Cabinet	06-Nov-24	Monmouth Churches Petition			Ian Bakewell	1-Oct-24
Council	24-Oct-24	RLDP			Craig O'Connor	
Council	24-Oct-24	Safeguarding report – Social Care & Health			Jane Rodgers	4-Jun-24

Council	24-Oct-24	Connecting Care – Social Care Case Management System - deferred		Deferred	Jane Rodgers	7-Oct-24
Council	24-Oct-24	Statement of Gambling Policy and proposals for casinos			Linda O Gorman	9-Jul-24
Council	24-Oct-24	Standards Committee Annual Report			James Williams	4-Oct-24
Council	24-Oct-24	Chief Officer report – Social Care & Health			Jane Rodgers	4-Jun-24
ICMD	23-Oct-24	UWN Land Charge			Amy Longford	25-Sep-24
ICMD	23-Oct-24	Welsh Church Fund Working Group - meeting 2	Ben Callard - Resources		Dave Jarrett	13-Jun-24
Cabinet	16-Oct-24	2025/26 Revenue and Capital MTFP update and process	Ben Callard - Resources		Jon Davies	4-Jun-24
Cabinet	16-Oct-24	2024/25 Revenue Monitoring Month 4	Ben Callard - Resources		Jon Daviea	4-Jun-24
ICMD	09-Oct-24	Building at Risk Strategy	Paul Griffiths - Sustainable Economy		Craig O'Connor	28-Aug-24
Cabinet	25-Sep-24	People with Care Experience			John Pearson	

Council	19-Sep-24	Appointment to Outside Body			Charlotte Drury	
Council	19-Sep-24	Self-assessment report – People, Performance and Partnerships		To appoint a Monmouthshire Councillor to be a representative on the Rachel Herbert’s School Endowment Charity.	John Pearson	
Council	19-Sep-24	Gov & Audit Annual Report			Matt Gatehouse	4-Jun-24
Council	19-Sep-24	Home to School Transport – response to consultation	Andrew Blackmore			21-Jun-24
Cabinet	11-Sep-24	Measurement Framework	Paul Griffiths - Sustainable Economy		Deb Hill Howells	4-Jun-24
Cabinet	11-Sep-24	Consultation on the relocation of Ysgol Gymraeg Y Fenni	Mary Ann Brocklesby - Whole Authority Strategy	To approve an update to the measurement framework that enables Cabinet to track progress against the priorities in the community and corporate plan	Matt Gatehouse	7-Jun-24
Cabinet	11-Sep-24	USE OF SECTION 106 FROM N584 LAND AT FORENSIC SCIENCE CHEPSTOW	Martyn Groucutt - Education	To receive feedback on the statutory consultation concerning the proposed relocation and increase in capacity of Ysgol Gymraeg Y Fenni.	Matt Jones	
Cabinet	11-Sep-24	Authorisation of Proper Officers - Public Protection, Environmental Health (Communicable Disease)			Christian Schmidt	7-Aug-24
ICMD	11-Sep-24	Monmouthshire Local Toilets Strategy - revised version 2024	Angela Sandles - Engagement		Louise Driscoll	
ICMD	11-Sep-24	GRT sites	Angela Sandles - Engagement		David H Jones	

Cabinet	21-Aug-24	Future of the former Tudor Street Day Centre, Abergavenny	Ian Chandler - Social Care & Safeguarding		4-Jun-24	
Cabinet	21-Aug-24	Welsh Church Fund Working Group - meeting 1		Nick Keyse		
ICMD	21-Aug-24	Increasing Building Regulations Charges	Ben Callard - Resources	Dave Jarrett	6-Jun-24	
ICMD	21-Aug-24	Gypsy & Traveller Site Identification	Paul Griffiths - Sustainable Economy	nigel george		
Cabinet	21-Aug-24	Performance and Overview Scrutiny Committee ~ Feedback to Cabinet of Meeting held on 16th July 2024		Frances O'Brien		
Cabinet	21-Aug-24	Older People's Champion		Alistair Neill		
Council	18-Jul-24	Chief Officer report – Children and Young People	Ian Chandler - Social Care & Safeguarding	To formally appoint to the role of Age Friendly champion in line with the commitment made by Council in January of this year and to provide a brief update on work done towards making Monmouthshire an age friendly county	Matthew Gatehouse / Jane Rodgers	27-Jun-24
Council	18-Jul-24	Medium Term Financial Strategy		Will McLean	4-Jun-24	
Council	18-Jul-24	Budden Crescent business case	Ben Callard - Resources	Jon Davies	4-Jun-24	
Cabinet	17-Jul-24	Feedback from P&O Scrutiny	Ian Chandler - Social Care & Safeguarding	Jane Rodgers	4-Jun-24	

Cabinet	17-Jul-24	Connected Care report – Social Care and Health (possible Sept)			26-Jun-24
Cabinet	17-Jul-24	Digital and Data Strategy	Ian Chandler - Social Care & Safeguarding	Jane Rodgers	4-Jul-24
Cabinet	17-Jul-24	Revenue and Capital monitoring outturn report (including early update on 2024/25)	Ben Callard - Resources		10-Jun-24
Cabinet	17-Jul-24	SPEED LIMIT PROPOSALS – AMENDMENT ORDER NO. 14	Ben Callard - Resources	Jon Davies	10-May-24
ICMD	10-Jul-24	Whole Authority Strategic Risk Assessment	Catrin Maby - Climate Change and Environment	Graham Kinsella	
Cabinet	05-Jun-24	People Strategy		Richard Jones	26-Apr-24
Cabinet	05-Jun-24	Consultation on the relocation of Ysgol Gymraeg Y Fenni	Ben Callard - Resources	Matt Gatehouse	1-May-24
Cabinet	05-Jun-24	Feedback from P&O Scrutiny	Martyn Groucutt - Education	Matthew Jones	26-Feb-24
Cabinet	22-May-24	Strategy for Commissioned Domiciliary Care in Monmouthshire		Hazel Ilett	14-May-24
Cabinet	22-May-24	Council Tax Assistance for MCC Foster Carers	Ian Chandler - Social Care & Safeguarding	Ceri York	24-Apr-24

ICMD	22-May-24	Florence Jones Report & FGE	Ian Chandler - Social Care & Safeguarding	The purpose of this paper is to present the case for providing Monmouthshire County Council foster carers with a subsidy on their council tax.	Jane Rodgers	8-May-24
ICMD	22-May-24	Political Balance Report	Paul Griffiths - Sustainable Economy	to consider the options in relation to the collection of monies secured under a land charge on land at and including Upper House Farm, Wonastow, Monmouth	Amy Longford	30-Apr-24
Council	16-May-24	Appointments to Committees	Angela Sandles - Engagement		James Williams	
Council	16-May-24	Outside Bodies	Angela Sandles - Engagement		James Williams	
Council	16-May-24	Uploading S106 Capital Sums into 2024/25 Capital Budget	Angela Sandles - Engagement		James Williams	
Cabinet	15-May-24	Development of a Supported Accommodation Project for care experienced young people	Ian Chandler - Social Care & Safeguarding		Mike Moran	9-Apr-24
Cabinet	15-May-24	Repurposing of Severn View Residential Home, Chepstow	Ian Chandler - Social Care & Safeguarding		Jane Rodgers	24-Apr-24
Cabinet	15-May-24	Local Housing Market Assessment	Paul Griffiths - Sustainable Economy	To seek approval for the repurposing of Severn View Residential Home to support policy objectives around temporary accommodation, in accordance with the Rapid Rehousing Strategy.	Nick Keyse/Cath Fallon	
Cabinet	15-May-24	Local Flood Strategy	Paul Griffiths - Sustainable Economy	The LHMA provides a review of the need for affordable and market housing across Monmouthshire and an overview of the current housing market.	Sally Meyrick	8-Jan-24
Cabinet	15-May-24	Local Transport Plan	Paul Griffiths - Sustainable Economy		Carl Touhig	9-Oct-23

Cabinet	15-May-24	Climate and Nature Emergency	Catrin Maby	To adopt the Local Transport Plan	Debra Hill-Howells / Christian Schmidt	4-Oct-22
Cabinet	15-May-24	Greenfingers Report		To receive an update on progress made towards the Climate and Nature Emergency Strategy and to agree the new overarching Climate and Nature Emergency Strategy and action plan format	Hazel Clatworthy	19-Oct-23
Cabinet	15-May-24	Local Housing Market Assessment Refresh 2022-2037	Ian Chandler - Social Care & Safeguarding		Jane Rodgers	26-Mar-24
Cabinet	15-May-24	Local Food Strategy		To provide an overview of the Local Housing Market Assessment Refresh 2022-2037 which provides an estimation of the additional affordable housing need across Monmouthshire.	Sally Meyrick	15-Apr-24
Cabinet	15-May-24	Placement Development Strategy			Marianne Elliot	18-Apr-24
Council	18-Apr-24	ICMD Report - 20 mph Speed Limit Revocation Order	Ian Chandler - Social Care & Safeguarding	development of in-county residential and supported accommodation placements for children who are looked after. To make recommendations about i) changing the use of 3 existing properties in order to support the strategy	Jane Rodgers / Diane Corrister	8-Jan-24
ICMD	17-Apr-24	ICM report - Florence Jones DEFERRED	Catrin Maby - Climate Change and Environment		Graham Kinsella	22-Mar-24
ICMD	17-Apr-24	Public Spaces Protection Order Dog Controls	Paul Griffiths - Sustainable Economy		Amy Longford	11-Mar-24
Cabinet	10-Apr-24	Primary School catchment areas consultation feedback	Paul Griffiths - Sustainable Economy		Huw Owen	19-Feb-24
Cabinet	10-Apr-24	Sustainable Communities for Learning Strategic Outline Programme update	Martyn Groucutt - Education	For Members to receive feedback on the consultation relating to a review of Primary School catchment areas and determine whether to implement proposals	Matthew Jones	20-Nov-23

Cabinet	10-Apr-24	Welsh Church Fund Working Group	Martyn Groucutt - Education	To provide members with details of the revisions to the Strategic Outline Programme for the Sustainable Communities for Learning Programme which will inform the development of projects within the rolling programme of	Debbie Graves	12-Sep-23
ICMD	27-Mar-24	Experimental TRO Prohibition of driving except for access Goldwire Lane Monmouth	Ben Callard - Resources		Dave Jarrett	
ICMD	27-Mar-24	Increase in building control charges	Catrin Maby - Climate Change and Environment		Graham Kinsella	
ICMD	13-Mar-24	To consider a Business Case for the acquisition of a property for use as a registered children's home	Paul Griffiths - Sustainable Economy		Craig O'Connor	
Cabinet	06-Mar-24	Adoption of Abergavenny Placemaking Plan	Ian Chandler - Social Care & Safeguarding		jane Rodgers	13-Feb-24
Cabinet	05-Mar-24	Adoption of Magor Placemaking Plan	Paul Griffiths - Sustainable Economy	To adopt the Abergavenny Placemaking Plan, co-produced with Abergavenny Town Council, to inform future regeneration priorities and grant bids	Mark Hand / Dan Fordham	3-Oct-22
Cabinet	05-Mar-24	Adoption of Monmouth Placemaking Plan	Paul Griffiths - Sustainable Economy		Mark Hand / Dan Fordham	3-Oct-22
Cabinet	05-Mar-24	Road Safety Strategy	Paul Griffiths - Sustainable Economy		To adopt the Monmouth Placemaking Plan, co-produced with Monmouth Town Council, to inform future regeneration priorities and grant bids	Mark Hand / Dan Fordham
Cabinet	05-Mar-24	Agree the name of the new Welsh-medium Primary School in Monmouth	Catrin Maby	To adopt the Road Safety Strategy	Mark Hand / Paul Keeble	4-Oct-22
Council	29-Feb-24	Standards Committee Appointment	Martyn Groucutt - Education	Agree the name of the new Welsh-medium Primary School in Monmouth	Debbie Graves	15-Nov-23

Council	29-Feb-24	Strategic Equality Plan 2024			James Williams	6-Feb-24
Council	29-Feb-24	Appointment of Monmouthshire Local Access Forum		To seek approval of a new Strategic Equality Plan for the period 2024-28, incorporating MCCs contribution to national action plans on race equality, LGBTQ and other protected characteristics	Matthew Gatehouse	15-Nov-23
Council	29-Feb-24	Final Budget Proposals		To secure the appointment of members to the Monmouthshire Local Access Forum for its next 3 year period.	Matthew Lewis	18-Jan-23
Council	29-Feb-24	Capital and Treasury Strategy	Ben Callard - Resources		Jon Davies	
Council	29-Feb-24	Council Diary	Ben Callard - Resources		Jon Davies	
Council	29-Feb-24	WCF/Trust Treasury Fund Investment	Angela Sandles - Engagement		John Pearson	
ICMD	28-Feb-24	2023/24 Revenue and Capital Monitoring - Month 9	Ben Callard - Resources			
Cabinet	28-Feb-24	2023/24 Final Revenue and Capital Budget Proposals	Ben Callard - Resources		Jon Davies	27-Apr-23
Cabinet	28-Feb-24	Economic Development Strategy	Ben Callard - Resources		Jon Davies	
Cabinet	07-Feb-24	Amendment to Street Naming and Numbering Policy regarding Replacement or additional Street nameplate signs for Existing Streets		REFRESHING THE MONMOUTHSHIRE BUSINESS GROWTH & ENTERPRISE STRATEGY and action plan in setting the economic ambition for the county and providing a strategic framework that guides future economic	Hannah Jones	9-Jan-23

ICMD	24-Jan-24	Community Council & Police Precepts - Determination	Catrin Maby - Climate Change and Environment		Mark Hand	2-Jan-24
ICMD	24-Jan-24	Introduction of Council Tax Premiums for Second homes from 1 st April 2024	Ben Callard - Resources		Jon Davies	
Council	18-Jan-24	Council Tax Reduction Scheme	Ben Callard - Resources	Council to re affirm their decision on the Second Home Premium	Ruth Donovan	5-Dec-23
Council	18-Jan-24	Asset Management Strategy	Ben Callard - Resources		Ruth Donovan	
Council	18-Jan-24	Community & Corporate Plan performance update			Nick Keyse	28-Sep-23
Cabinet	17-Jan-24	REPURPOSING OF ACCOMMODATION IN THE COUNTY FARMS PORTFOLIO TO SUPPORT HOMELESSNESS AND OTHER POLICY OBJECTIVES	Mary Ann Brocklesby - Whole Authority Strategy	To provide cabinet with the latest performance report of commitments in the Community and Corporate Plan	Richard Jones	5-Sep-23
Cabinet	17-Jan-24	consultation on the relocation of Ysgol Gymraeg Y Fenni		To seek approval for the repurposing of vacant cottages held within the County Farms Portfolio to support policy objectives such as alleviating pressures with homelessness and to address the reliance on unsuitable temporary accommodation.	Nick Keyse	4-Dec-23
Cabinet	17-Jan-24	Approval of the revised MCC Counter Fraud, Corruption & Bribery Policy	Martyn Groucutt - Education		Matthew Jones	23-Aug-23
Cabinet	17-Jan-24	Draft Budget Proposals	Rachel Garrick - Resources		Jan Furtek	2-Nov-23
Cabinet	17-Jan-24	Welsh Church Fund Working Group - meeting 3 held on 7th December 2023 Meeting didn't happen	Ben Callard - Resources		Jon Davies	29-Sep-23

ICMD	03-Jan-24	Community Council & Police Precepts - Proposed payment schedule	Rachel Garrick - Resources		Dave Jarrett	30-Mar-23

This page is intentionally left blank

Monmouthshire Select Committee Minutes

Meeting of Place Scrutiny Committee held at Council Chamber, County Hall, The Rhadyr USK on Thursday, 10th October, 2024 at 2.00 pm

Councillors Present

County Councillor Jane Lucas (Chairman)
County Councillor Lisa Dymock, (Vice Chairman)

County Councillors: Louise Brown, Emma Bryn, Tomos Davies, Jackie Strong, Tudor Thomas, Laura Wright, and John Crook

Officers in Attendance

Hazel Ilett, Scrutiny Manager
Robert McGowan, Policy and Scrutiny Officer
Frances O'Brien, Chief Officer, Communities and Place
Rachel Lewis, Planning Policy Manager
Craig O'Connor, Head of Placemaking

APOLOGIES: None

Note: Minutes do not serve as a verbatim record of the meeting but provide a summary of the Committee's discussion. For the full discussion, please access the recording of the meeting:

www.youtube.com/watch?v=le1EoOVikQo&list=PLlmqn4nAaFJAaDA9m3C2P8ZdJsca-bkSU&index=18

1. Declarations of Interest

None.

2. Public Open Forum

The Chair advised that many submissions had been received and that it would not be possible to read them out at the meeting due to the significant number. She advised that written submissions received in sufficient time ahead of the meeting had been shared with the committee, Cabinet Member and officers, and that any submissions received since, would be forwarded to the Cabinet Member and officers for further consideration.

The Chair noted receipt of 15 written submissions objecting to site CS0270 in the plan, and a further two objecting to land at Mounton Road and land west of Usk, Penperlleni. Three members of the public spoke at the meeting about CS0270 raising a number of concerns:

- Sufficiency of infrastructure, how homes will be zero carbon when the developer has not committed to it until 2050, potential increases in

phosphate discharge which already exceed permissible levels, questioning whether sufficient funds will be available, asking why the 270 homes can't be added to Abergavenny, and suggesting it is too far from the town centre for walking or cycling whereas at Abergavenny the homes would be closer to the train station.

- Noting that CS0270 is a special site given its beauty and location, its importance to the greater horseshoe bats, its visibility from the Area of Outstanding Natural Beauty and proximity to a scheduled ancient monument, objecting to the loss of prime agricultural land – suggesting that CS0274 would therefore be a better alternative.
- Raising concerns about traffic emissions and air quality monitoring in Monmouth, suggesting that the current methodology is flawed and lacks sufficient data on real or projected emissions.

The Chair thanked the public for their input, through sending written submissions and by contributing to the meeting via the Public Open Forum.

3. RLDP Deposit Plan

Cabinet Member Paul Griffiths introduced the report, delivered a presentation, and answered the members' questions with Craig O'Connor. In his presentation of the report, Councillor Griffiths acknowledged the following:

- Demographic Trends: He highlighted the decline in school-age and working-age populations in Monmouthshire, contrasting with the growth in the over-65 population, emphasizing the need to reverse these trends to maintain sustainable communities.
- Housing and Affordability: He stressed the importance of increasing the supply of housing, particularly affordable housing, to retain young people in the county, highlighting that 50% of the population cannot afford to purchase homes on the open market, necessitating a high level of affordable housing in the plan.
- Plan Proposals: He outlined the plan to provide 2000 new homes over 15 years, with 50% being affordable, explaining that 660 of these would be social housing for rent, with 330 being low-cost home ownership options.
- Employment Land: He discussed the provision of 48 hectares of employment land to support job growth and address the lack of land for business expansion.

- **Sustainability and Infrastructure:** He emphasized that new homes will be within walking distance of existing settlements, will be net zero carbon, and will be supported by necessary infrastructure.
- **Overall Vision:** He explained that the plan aims to create younger, more sustainable communities by providing appropriate housing and job opportunities, whilst protecting the environment, and supporting existing town centres.

The Chair thanked the Cabinet Member for presenting the report and proceeded to take questions and key points from the Committee, with answers being given by the Cabinet Member and officers.

Questions and key points raised by the Committee:

- A member asked whether in relation to candidate site CSO270, what the impact would be of the influx of residents arising from the rollover sites from the previous LDP of 280 homes, and how this would affect the number of vehicles on the roads.

They were advised that the planning policy team have reviewed the sites and considered the impact on existing infrastructure and that the Dixton Road site was identified as the most appropriate and sustainable option.

- It was asked whether the 5.8-hectare candidate employment site is sufficient to provide enough employment opportunities for those living in the new homes, in order that Monmouth's residents fulfil the criterion of living sustainable lifestyles. The member raised their concerns about further exacerbation of road congestion.

They were advised that there is 4.5 hectares of employment land allocated at the Wonastow Rd site, and that this should create jobs within the area to balance the housing.

- A member asked how Monmouth qualifies as a sustainable development considering the severe lack of public transport links.

They were advised that Monmouth was allocated a site to keep the community sustainable and ensure a balanced demographic. They also confirmed that the strategic phosphate solution for Monmouth enables sustainable development.

- A member asked why the local transport strategy isn't included within the RLDP and why transport assessments aren't conducted until the planning stage.

Officers advised that infrastructure considerations are part of the planning process, and transport assessments are typically conducted during the planning stage.

- A question was asked as to what processes can be put in place to mitigate the potential harms caused by the post-development loss of green spaces, which could increase surface runoff and intensify flooding.

They were advised that all developments in Wales are subject to sustainable drainage requirements, meaning that runoff must be managed within the site itself to prevent increased flood consequences.

- A member questioned whether the 'dark skies policy' will sufficiently mitigate the harms caused to the greater horseshoe bats, when taking into account the urbanisation of the site and the loss of their feeding locations.

The officers reassured members that environmental considerations, including the impact on local wildlife, are part of the planning process and will be taken into account.

- A member asked about the land ownership of the proposed Abergavenny East development; specifically, if the landowner of CS0293 has agreed to the master plan, and if the land within Monmouth Housing Association's control is within its control. The member expressed concerns about the ability to deliver the proposed master plan if these conditions are not met.

Officers confirmed that both landowners have put their sites forward for development, but that neither has fully agreed to the master plan. The master plans are developed based on the planning policy framework that the Council wishes to impose. Negotiations and detailed conversations with all partners will continue, to ensure that the development proposal is realised.

- A member queried whether the Council is prepared to use compulsory purchase orders (CPOs) as a policy principle to advance key strategic developments.

The Cabinet Member advised that a range of opportunities are available to the Council, and that the approach will be pragmatic and effective, with negotiation being the first priority.

- A member asked about the potential harms from post-development urbanisation, specifically the paving of gardens, which they were concerned could increase runoff and intensify flooding. The member asked whether anything can be done to mitigate such potential harms.

Officers responded that this was a valid point and suggested that the Planning Committee could reduce permitted development rights further if there is evidence that it would result in additional surface runoff. Additionally, any application will need to submit a flood consequence assessment at the planning stage.

- A member highlighted the need to ensure good connections for the large development on the eastern side of Abergavenny, and stressed they felt it was important to achieve a balance between housing and employment land across the county. They raised their concern about pedestrians crossing the AA465 and emphasised the need to integrate travel infrastructure in Abergavenny, asking for reassurance about travel connections if the Abergavenny East development goes ahead.

The Cabinet Member advised that discussions with the developer, the Design Commission, and the Trunk Road Agent have indicated plans for three crossing places across the A465, controlled by lights, to ensure safe pedestrian and driver experiences. He explained that the infrastructure would aim to ensure residents feel comfortable crossing the road and would integrate the new development with the town.

- Concern was expressed by a member about the significant infrastructure gaps in areas like Monmouth, Caldicot, and Chepstow, particularly in terms of transport, healthcare, and education. They asked how the plan would ensure that communities wouldn't be even more strained in terms of essential services. They also expressed concerns about the practicality of walking and cycling for working couples and young families and their view that there is a lack of clear commitments and timelines for improving the infrastructure.

The Cabinet Member and officers responded that the RLDP is a high-level document and advised that detailed planning applications will follow for all sites. They emphasised that active travel links are being integrated from the early stages to encourage walking and cycling. They also advised that there is ongoing work with the Health Board to manage and respond to healthcare pressures and they stressed the importance of achieving balanced development across the county.

- Another member echoed their concerns around the lack of infrastructure and stated that there is a need for detailed planning to support the proposed developments.

The Cabinet Member and officers discussed the infrastructure delivery plan, which includes provisions for transport, education, and healthcare facilities to support the new developments.

- A member questioned the viability of the RLDP without an in-depth viability statement, especially for major sites. They asked how 50% affordable housing and net zero carbon ready homes would be achieved.

Officers explained that the RLDP allocates land for development, and that the Council has other strategies to attract businesses and create jobs. The economic strategy for example, aims to create a mix of job opportunities, including high-value jobs. The officer confirmed that the viability of 50% affordable housing has been assessed and has been deemed achievable.

- It was questioned why Caldicot East/Portskewett was being identified for a significant share of the county's housing needs and what was the rationale for concentrating development in an area with already limited amenities. The member asked for clarification on plans to address these issues before construction begins.

Officers responded that Caldicot is considered to be a sustainable place for development due to its amenities and connections. Members were advised that the development will include a new primary school and active travel links to ensure sustainability. Officers confirmed that the Council is working to ensure that infrastructure and amenities are in place to support the new development.

- A member asked for clarity on the land grade for the employment land north of the Portskewett site and raised their concern as to whether farmers are being kept up to date with the process, highlighting a farmer who was unaware of the proposals.

Officers acknowledged the need to engage with all landowners and farmers and promised to follow up on the specific case mentioned, reiterating that the Council is committed to ensuring that all stakeholders are informed and involved in the process.

- A member raised concerns about the traffic congestion at High Beech Roundabout in relation to the Mountain Road site and suggested that sites in Chepstow should be contingent on High Beech roundabout improvements. The member expressed concern that there are so few references to road infrastructure in the main body of the report and highlighted the need for

site-specific requirements for road infrastructure improvements, similar to those in previous plans.

The Cabinet Member and officers responded that High Beech Roundabout is part of the Welsh Government's trunk road network, and that improvements are being considered through a Welsh Government study. They advised that the RLDP includes safeguarding land for potential improvements and confirmed that the development will incorporate necessary mitigations as they are identified.

- It was asked whether the 26 houses at the Shirenewton site are in addition to the 11 houses previously planned at Clearview Court and how concerns about sewage capacity in the area will be addressed.

Officers clarified that the development boundary has changed, and that the 26 houses are the new allocation, with the previous 11 houses no longer included. They acknowledged the existing sewage issues and reassured that they are committed to working with Welsh Water and NRW to address them.

- A member emphasised the need for affordable housing to be available to local people in the Shirenewton area and suggested a mix of housing sizes, including three-bedroom homes, to accommodate young families.

Officers stated that they agreed on the importance of a housing mix and confirmed that the allocation process would prioritise local needs. They advised that the policy framework aims to provide a variety of housing options, including two, three, and one-bedroom properties, to meet the needs of the community.

- It was questioned how the public consultation for the RLDP will ensure that the voices of people who are intended to benefit from the plan can be heard, particularly working-age people and those with young children. They emphasized the need to engage this underrepresented group effectively.

The Cabinet Member responded that the consultation process will include exhibitions, online consultations, public meetings, and drop-in opportunities in all population areas. Efforts will be made to advertise these events widely, including using gazebos on High Streets to increase visibility. He also highlighted the role of local councillors in encouraging community engagement and ensuring a balanced representation of views.

- A member sought reassurance that the RLDP will protect the Nedern and the living levels, emphasising the environmental importance of these areas and the need to balance housing development with environmental protection.

The Cabinet Member advised the committee that the Nedern and the green land around the castle are not only protected but celebrated in the plan. He emphasised that these areas are seen as assets that will connect the existing town with the new development, ensuring their protection and integration into the community.

- The Chair expressed concerns about the removal of habitat in relation to CS0270, and the claim that a buffer would improve it, and expressed concern about the best quality land being removed.

Officers responded, advising that while development will result in the loss of some agricultural land, the plan includes measures to enhance the remaining habitat, in line with planning policy requirements.

- Concerns were expressed about traffic congestion issues at the proposed site, given the increase in cars, as well as pollution, and it was asked how the exit on to Hereford Road can qualify as an emergency exit. A member queried whether there are any guarantees that the site will not grow further.

The Cabinet Member and officers responded, discussing the infrastructure requirements, including improvements to the local bus network and safeguarding land for potential road improvements. They confirmed that detailed transport assessments will be conducted at the planning application stage. The Cabinet Member acknowledged the importance of addressing pollution and mentioned that the environmental health team would review the concerns raised about air quality.

- Another member questioned the possibility of extending the consultation period.

The Cabinet Member explained that there are various engagement methods for the consultation process, and he emphasised the role of local councillors in encouraging community participation.

- A question was asked as to whether the affordable housing can really be considered as 'affordable' and whether there would be a consequent impact on the Section 106 monies associated with developments.

Officers explained that viability assessments will ensure the 50% affordable housing target is achievable and that the mix of social rent, shared ownership, and market housing options will address affordability. The Cabinet Member Griffiths addressed concerns about the affordability of housing, explaining that the proposals are based on the local housing needs assessment. He emphasized that 50% of the population

can afford market housing, 17% can afford low-cost home ownership or shared equity, and the remainder would need social rent. He also mentioned that shared equity properties revert to the Council or social landlord at the point of sale to ensure they remain affordable.

The Cabinet Member also sought to reassure the committee that the sums required for Section 106 contributions in the future are comparable to those achieved in the past, indicating that the stress on affordable and zero-carbon housing will not squeeze out funding for necessary infrastructure.

Additional Comments from Members

- A member expressed their concern about the visibility of the site from the Area of Outstanding Natural Beauty and the effect on the view when entering Monmouth.
- Another member emphasised the need to encourage more working age people and retain younger people in the county.
- It was also queried how the Council plans to avoid the risk of Monmouthshire becoming more of a commuter zone than it already is.

Chair's Summary:

As part of her summary, the Chair highlighted the following key points and issues raised by members during the debate:

- Active travel concerns and traffic growth.
- Concerns about commuting traffic due to higher-paid jobs outside the area.
- Concerns about amenities in the Portskewett ward.
- Concerns about the healthcare infrastructure in all areas.
- Monmouth's lack of travel links.
- Concerns about traffic congestion at the Mounton Road site.
- Some concerns about car emissions and pollution, members stressing the need to protect the Nedern and Castle grounds.
- Dark skies policy and bat habitat concerns.
- The need to balance development with environmental protection.
- Concern about the sewage issues in the Mounton Brook area.
- The need for affordable housing for local people and appropriate housing sizes for growing families, particularly the importance of housing for younger people.

- Questions around Abergavenny East development, concerns particularly relating to transportation and active travel, the master plan, land ownership, and compulsory purchase considerations.
- Ensuring local voices are heard and engaging the community effectively.

The Chair acknowledged the substantial public input into the meeting, both in terms of speakers and written submissions and advised that all written submissions would be forwarded to the Cabinet Member and officers following the meeting for their ongoing consideration.

Thanks were given to the public for their input and the Chair explained that the Place Scrutiny Committee is unable to make decisions, but having scrutinised the RLDP Deposit Plan would be offering its feedback to the Cabinet Member and Officers, as to whether the Committee supports the plan in its current form.

A vote took place, with four members of the committee expressing they were not in favour of the plan in its current form and four members supporting the plan in its current form (1 member having left early).

4. Place Scrutiny Committee Forward Work Programme and Action List

The Forward Work Programme was noted and the timescales for the Parking Review would be clarified.

5. Cabinet and Council Forward Plan

The plan was noted.

6. To confirm the minutes of previous meetings:

- 11th July 2024
- 24th July 2024 (Special)
- 3rd September 2024 (Special)

The minutes were confirmed, proposed by Councillor Lucas and seconded by Councillor Wright.

7. Next Meeting: 7th November 2024

Confirmed as 7th November 2024

The meeting ended at **5.08 pm**